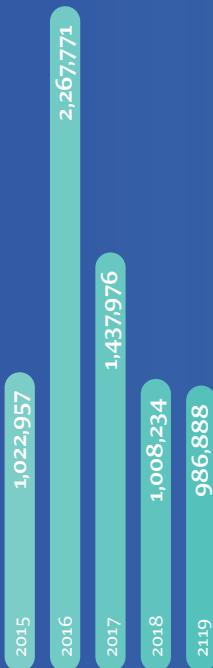


# Fiscal stability and asset growth

## Revenue

**986.9** million

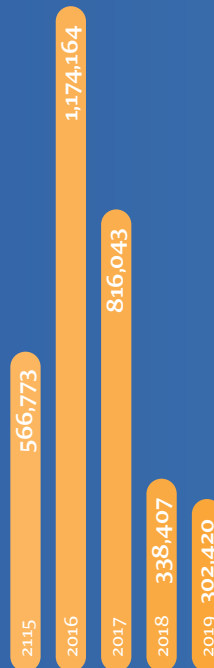
SR'000



## Gross Profit

**302.4** million

SR'000



## Total Assets

**17.6** billion

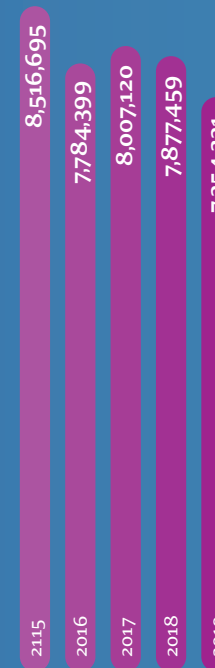
SR'000



## Shareholders' Equity

**7.4** billion

SR'000



### Commercial Properties

**50**

National and international companies

### Industrial Valley

**115** thousand metres<sup>2</sup>

National and international companies

### King Abdullah Port

**17.3** km<sup>2</sup>

63.4% developed



### Residential Properties

**15,958** units

Total number of residential products

### Bay La Sun

**96** thousand metres<sup>2</sup>

100% developed  
High-end communities



### Al-Murooj

**3.4** million metres<sup>2</sup>

100% developed  
High-end communities



### Al Talah Gardens

**3.0** million metres<sup>2</sup>

98% developed  
Middle-income communities



### Al-Waha

**243** thousand metres<sup>2</sup>

100% developed  
Middle-income communities



### Al-Shurooq

**150** thousand metres<sup>2</sup>

100% developed  
Affordable communities

